



PYROTHERM

ENERGY SAVING FURNACES



ROTARY RETORT FURNACE

(Electrically Heated / Gas Fired)

- Carburising, Hardening, Carbonitriding,
- Ceramic fibre module with ceramic vacuum board lining.
- Low voltage transformer with Nichrome 80 / 20 strip type heating elements.



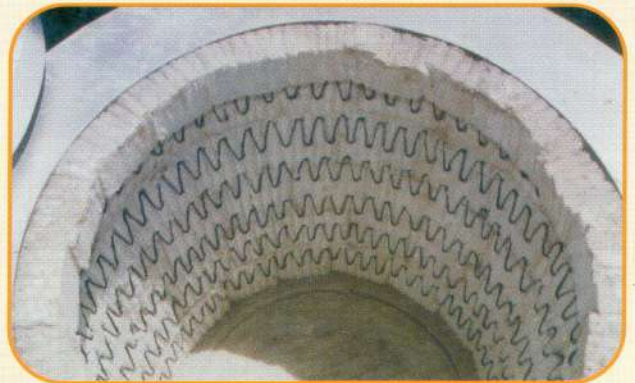
PIT TYPE GAS CARBURISING FURNACE (GCF)

(Electrically Heated)

- Carburising, Hardening, Carbonitriding.
- Ceramic Fibre module lined Furnace.
- Nichrome 80 / 20 strip type Heating Elements.
- No Water cooling for Fan Shaft & Retort.

CERAMIC FIBRE WITH STRIP TYPE HEATING ELEMENTS

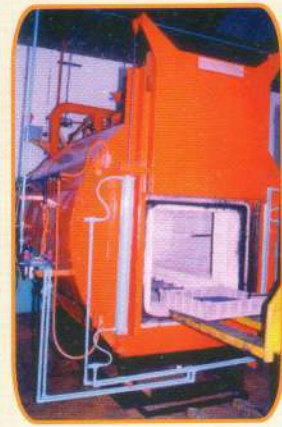
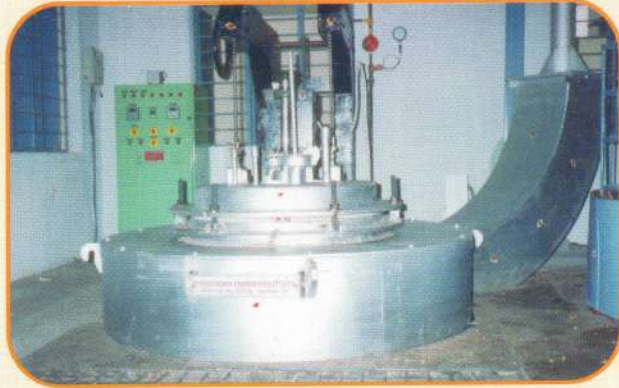
- Ceramic fibre module lining.
- Strip type heating elements with SS-310 Hooks.



PIT TYPE GAS CARBURISING FURNACE (GCF)

(Gas fired)

- Carburising, hardening, carbonitriding
- Ceramic fibre module lined furnace.
- Indian / imported gas burner.
- No water cooling for Fan Shaft & Retort.



ROLLER HEARTH CHAMBER FURNACE

(Gas fired / Electrically Heated)

- Ceramic fibre module lining
- Temperature uniformity ± 5 deg C
- SS-304 / 316 Rollers with geared motor.

SHAKER HEARTH FURNACE

- High quality Heat resistant cast shaker hearth plate
- Ceramic fibre module lining
- Low voltage transformer with nichrome strip type heating elements.



BOGIE / TROLLEY TYPE ALUMINIUM AGEING OVEN

- Nichrome wire elements on high alumina tubes.
- High capacity recirculating fans.
- Heavy bogie with wheels, rails.

ALUMINIUM MELTING / HOLDING FURNACE

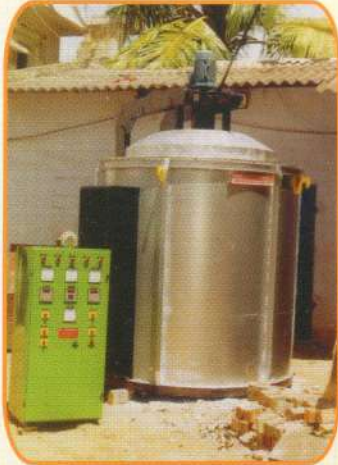
(Electrically heated / Gas / Oil fired)

- Ceramic fibre module with IS-8 Grooved bricks.
- Nichrome coil type heating elements with spare heating elements.
- Insulated door, Furnace shell double wall construction with Air gap.



**PIT TYPE ALUMINIUM SOLUTION
TREATMENT / TEMPERING FURNACE**

- Ceramic fibre module lining.
- SS-304 Baffle, high capacity recirculating fan for temperature uniformity ± 5 Deg C
- Strip type heating elements with SS-310 hooks.



BOGIE HEARTH FURNACE

(Electrically heated)

- Ceramic fibre module lining
- Heavy bogie with wheels, rails.
- Strip type heating element.

MESH BELT BRAZING FURNACE

- Inconel-600 muffle and mesh belt.
- Operating temperature 1150 Deg C
- Ammonia gas cracker unit.
- Kanthal A-1 wire elements on high Alumina tubes.



BOGIE HEARTH FURNACE

(Oil/Gas fired)

- Ceramic fibre module lining.
- North American type burner.
- Heavy bogie with wheels, rails.



MESH BELT OVEN

- Infra Red Heaters
- SS-304 mesh belt with variable speed motor



Excellent Quality

MESH BELT OVEN

- Nichrome wire cartridge type Heater
- SS-304 mesh belt with variable speed motor.



MONORAIL DRYING OVEN

(Gas fired / Electrically heated)



CONTINUOUS HARDENING MESH BELT / TEMPERING PLANTS

- Cast / fabricated muffle
- Nichrome wire elements on high alumina tubes.
- Atmosphere curtains
- Operation on Nitrogen methanol or endo gas.
- SCADA



SEALD QUENCH FURNACE

(Electrically Heated / Gas Fired)

- Carburising, Hardening, Carbonitriding
- Radiant Tube Heaters
- Pusher with Skid Rail Mechanism
- SCADA



PYROTHERM ENGINEERS

Mfrs. Of : Furnaces, Ovens Etc.

GST No. : 33ADNPR7802H1ZC

**No. A4, BMR Industrial Estate, Tass Industrial Estate,
Ambattur, Chennai - 600 098. Tamil Nadu, India.**

Ph : Chennai- 98401 73275, Pune - 99607 94928

E-mail : pyrothermengineers@gmail.com

Web : www.pyrothermfurnaces.com